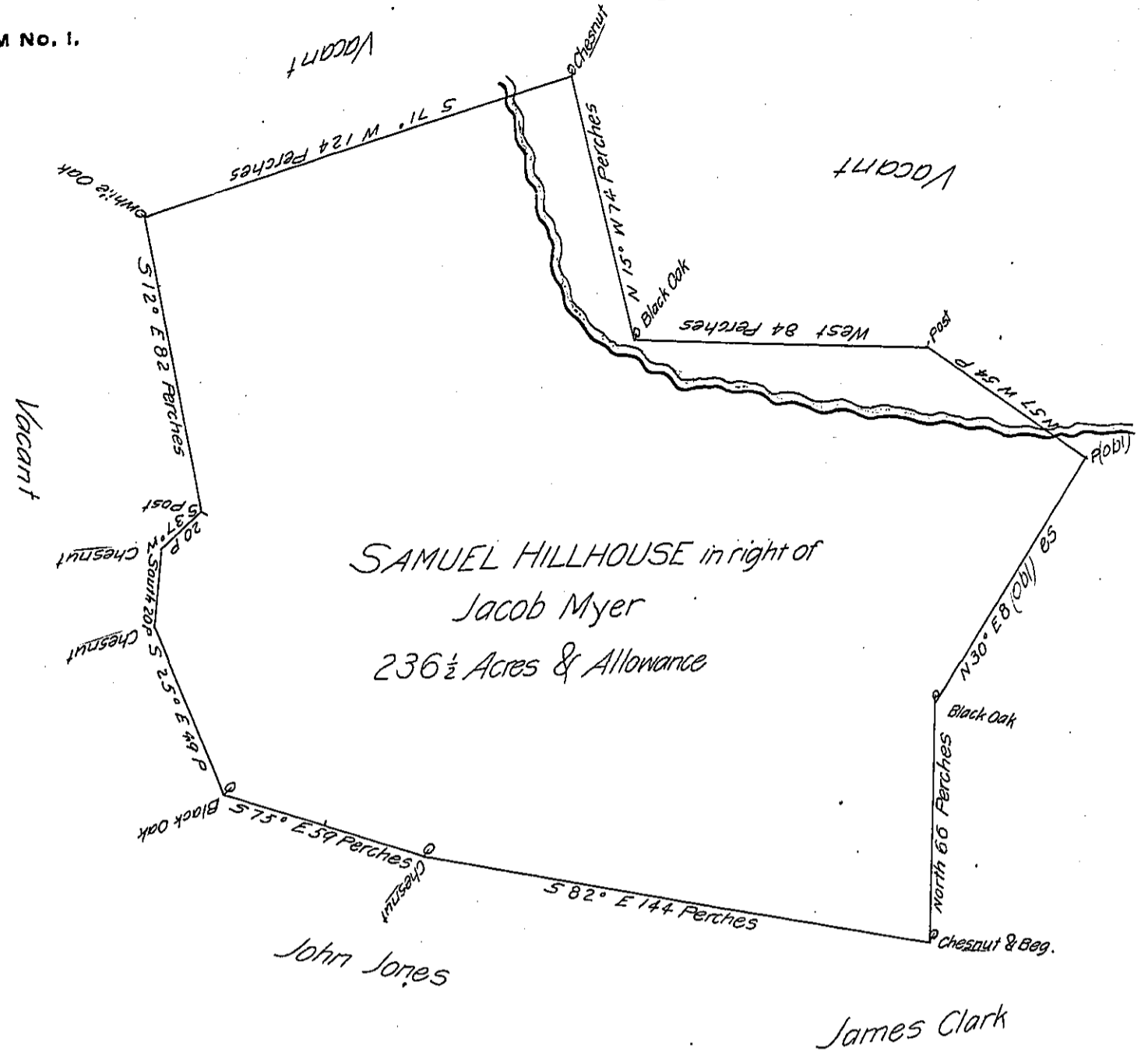


FORM No. 1.



A Draught of a Tract of Land Situate in Martic Tow (obl) easter County containing ~~two~~<sup>two</sup> hundred and thirty six Ac (obl) half and the Allowance of Six Acres P Cent for Roads and H (obl) Surveyed the 16<sup>th</sup> day of April 1751 for Samuel Hillhouse wh (obl) is Assignee of Jacob Myer (obl) a Warrant (obl) granted bearing Date the 15<sup>th</sup> March 1749 By Virtue of wh (obl) the above Tract of Land was Surveyed by M<sup>r</sup> Cookson late (obl)

( — o — b — l — i — t — e — r — a — t — e — d — )

IN TESTIMONY that the above is a copy of the original remaining on file in the Department of Internal Affairs of Pennsylvania, made conformably to an Act of Assembly approved the 16th day of February, 1833, I have hereunto set my Hand and caused the Seal of said Department to be affixed at Harrisburg, this ninth day of February 1906

*Grace B Brown*  
Secretary of Internal Affairs.